

I N T R O D U C I N G



TOTAL[™] DEFENSE

MULTI-LAYERED INTERNET SECURITY



TOTAL DEFENSE r12

internet security

rEINVENTED



r12

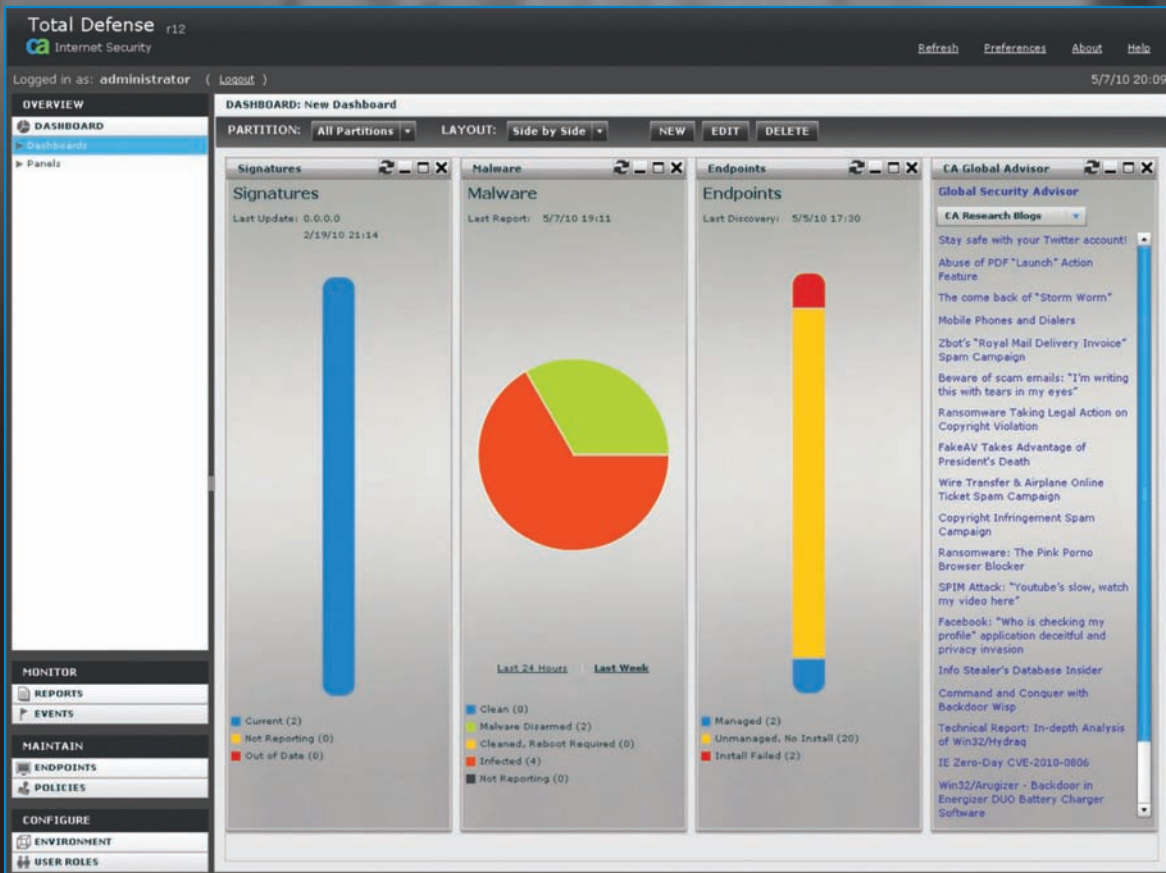
Every day, malware gets better at understanding how you work.

Does your security?

CA focused on IT professionals when creating Total Defense r12, a multi-layered Internet security solution engineered to work the way you do: with strength, clarity and flexibility. Total Defense isn't just a security solution. It's your security solution.

MULTI-LAYERED INTERNET SECURITY

Visually Refined



Graphical. Intuitive. Straightforward. Total Defense r12's dashboard keeps you informed at all times.

More Security.

With multiple layers of security, you're protected many times over.

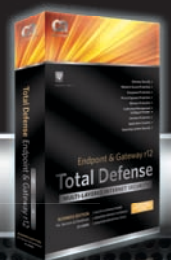
Less Cost.

Secure your IT and save money with surprisingly affordable pricing options.

Completely Installed.

Don't sweat the deployment. Let the industry's only remote installation team do it for you.

More Security. Less Cost.
Completely Installed.



TOTAL DEFENSE^{RT2}

workflow

rEDEFINED

When your Internet security is effective and easy to handle, you spend less time catching up to threats and more time getting ahead of them.



MULTI-LAYERED INTERNET SECURITY

Simply Powerful

Easy Management



One glance at the Total Defense management console tells you everything.

The streamlined interface compiles all critical endpoint information to give you a real-time picture of all the threats and vulnerabilities. You can also customize the dashboard and organize information the way you like it.

Policies: Click and Deploy



Set policies with point-and-click ease. Total Defense lets you tailor thousands of endpoint policies from your desk. No more logging-in to endpoints to fine-tune them one at a time.

Security That's Scalable



Configure both the installer and the engine in Total Defense to optimize your system

performance. Whether you're deploying it over two nodes or 200,000—locally or globally—you decide exactly how to use the power of Total Defense.

Multi-Layered Security



Behind every barrier, malware should find another barrier. Total Defense syncs

CA's award-winning malware protection with new capabilities in deployment, management, compliance and reporting. Your IT environment will be protected behind multiple layers of security.

Instant Auditable Reports



Multiple layers of security are useless if you can't see how they're performing. Total Defense can create

system-wide, customizable reports in real-time. So auditable data on security standards and compliance is always within a few clicks.

Seamless Switch



Thinking about replacing your anti-virus with the multilayered security of Total

Defense? Transitioning is easy. Total Defense automatically removes the old security software—that would take you hours to uninstall manually—to avoid any application conflicts.

New!

Network Access Protection

Manage your network policies and stay compliant with international security standards.

New!

Global Security Research Center

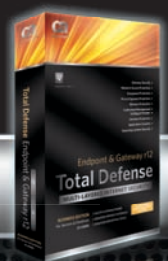
Knowledge is security. Get the latest threat updates and trends from around the world.

New!

Enhanced content filtering capabilities

Put spam in its place. Keep your gateway and endpoints safe.

More Security. Less Cost.
Completely Installed.



TOTAL DEFENSE r12

combinations

rEVAMPED

Choose from a full, flexible array of Total Defense security packages

You can start with any level of security and then upgrade easily without uninstalling or reinstalling software.

With cloud-based licensing, you can simply unlock new features in your Total Defense suite when you want more security.



Anti-Virus r12

- Virus and spyware protection
- Centralized management



Threat Manager r12

- Virus and spyware protection
- Groupware protection
- Centralized Reporting
- Endpoint security validation



Total Defense for Endpoint r12

- Virus and spyware protection
- Proactive protection against Zero-day threats
- Centralized Management



Total Defense for Endpoint Premium Edition r12

- Virus and spyware protection
- Proactive protection against zero-day threats
- Centralized Reporting
- Groupware protection
- Endpoint security validation



Total Defense for Endpoint and Gateway r12

- Virus and spyware protection
- Proactive protection against zero-day threats
- Centralized Reporting
- Groupware protection
- Endpoint security validation
- Protection for Gateway

MULTI-LAYERED INTERNET SECURITY

Total Defense Responds

Deployment: We Got It.



With our Remote Deployment Service, the only one of its kind in the industry,

you don't have to worry about installation. Our team of experts will install and configure Total Defense on your system—via broadband. So you can rest assured that your system is secured and configured correctly.

You're Covered: 24x7x365



Viruses don't just work 9 to 5. That's why our support lines are

open around the clock. With Total Defense on your side, you have our total support backing you—through web, phone, and chat—every hour of every day.

Stay Alert. Plan ahead.



Power your security with global intelligence.

Total Defense Security Advisor acts as an early warning system, streaming real-time alerts and tips, from CA's Global Security Research Center, to your dashboard. The more you know, the more prepared you are.

Cloud-Based Licensing and Upgrades



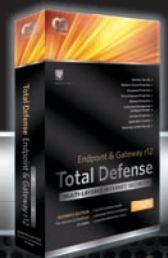
Need to upgrade? Just contact your reseller to unlock new capabilities in

your Total Defense suite. It's that simple—no uninstalling and reinstalling. The cloud-based licensing feature in Total Defense lets you easily allocate, track, and shift licenses; conduct migrations and upgrades.

	Anti-Virus r12	Threat Manager r12	Total Defense for Endpoint r12	Total Defense for Endpoint Premium Edition r12	Total Defense for Endpoint and Gateway r12
Anti-Malware	●	●	●	●	●
HIPS					
→ Endpoint Firewall			●	●	●
→ Intrusion Protection			●	●	●
→ Operating System Security			●	●	●
→ Application Controls			●	●	●
GROUPWARE					
→ Microsoft Exchange		●		●	●
→ Lotus Notes		●		●	●
→ Microsoft SharePoint		●		●	●
→ NetApp		●		●	●
Vulnerability Assessment	●	●	●	●	●
Unified Network Control (NAP)*		●		●	●
CA Gateway Security*					●

*Centralized management from a separate console

More Security. Less Cost.
Completely Installed.



Interested in Becoming
an Internet Security Partner?

visit: security.com/partners

Experience a virtual trial in the cloud.

Test drive Total Defense in the cloud. No infrastructure. No investment. No problem. The Total Defense Virtual Trial Center lets you simulate how it will work on your network. Run tests. Create policies. Discover endpoints. This isn't a demo. You'll experience the real Total Defense and get real results.

TOTAL[®] DEFENSE

MULTI-LAYERED INTERNET SECURITY

More Security. Less Cost.
Completely Installed



TotalDefense.com • Security.com/partner